



29 The Valley Way LISAROW NSW

4 🛏 2 🚿 2 🚗

Set in one of Lisarow's most desirable streets, this beautifully presented family home delivers the perfect blend of space, style, and comfort. Surrounded by other quality homes, it's ideal for growing families or those seeking to upsize without compromise. Freshly painted throughout and featuring tasteful modern updates, the home offers a fresh, welcoming feel with nothing left to do but move in and enjoy.

Type : House
Price : For Sale - Contact Agent
Building Size : 270 sqm
Land Size : 558 sqm
View : <https://www.gittoes.com.au/sale/nsw/central-coast-region/lisarow/residential/house/8406621>

Designed with functionality and lifestyle in mind, the home offers four generous bedrooms, all with built-in wardrobes. The master suite features a walk-in robe and private ensuite, while the remaining bedrooms are serviced by a stylishly updated main bathroom. Multiple living areas provide space for the whole family, with both formal and

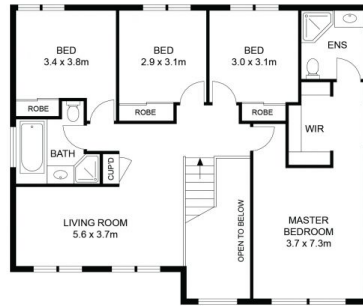


Ben Cheverall
02 4323 3811

[For full version visit the website](https://www.gittoes.com.au)



GROUND FLOOR



FIRST FLOOR



SITEPLAN
(NOT TO SCALE)

29 THE VALLEY WAY, LISAROW

Scale in Metres 0 1 2 3 4 5

- 4 Beds
- 2 Baths
- 2 Cars

All dimensions herein are approximate and gathered from sources believed to be reliable. Whilst every effort is made for the accuracy of our floor plans, interested parties should rely on their own enquiries.

Internal Area: 229m²
External Area: 41 m²

